

# MONTHLY MEMBERSHIP PROGRESS REPORT

LOCATION NEW MEXICO

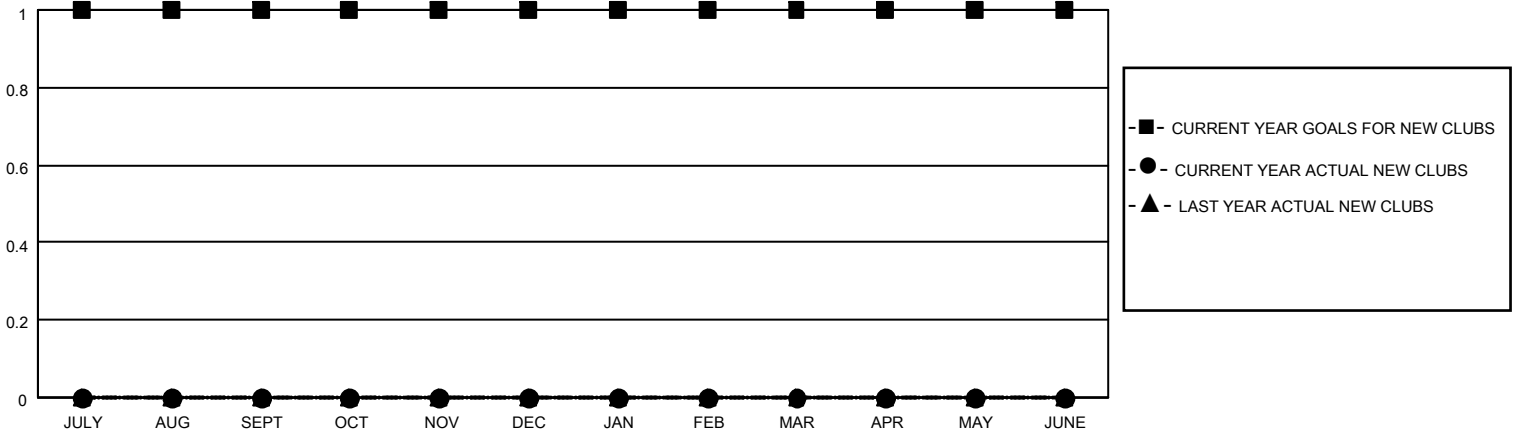
District 40 N

Results as of: 6/30/2023

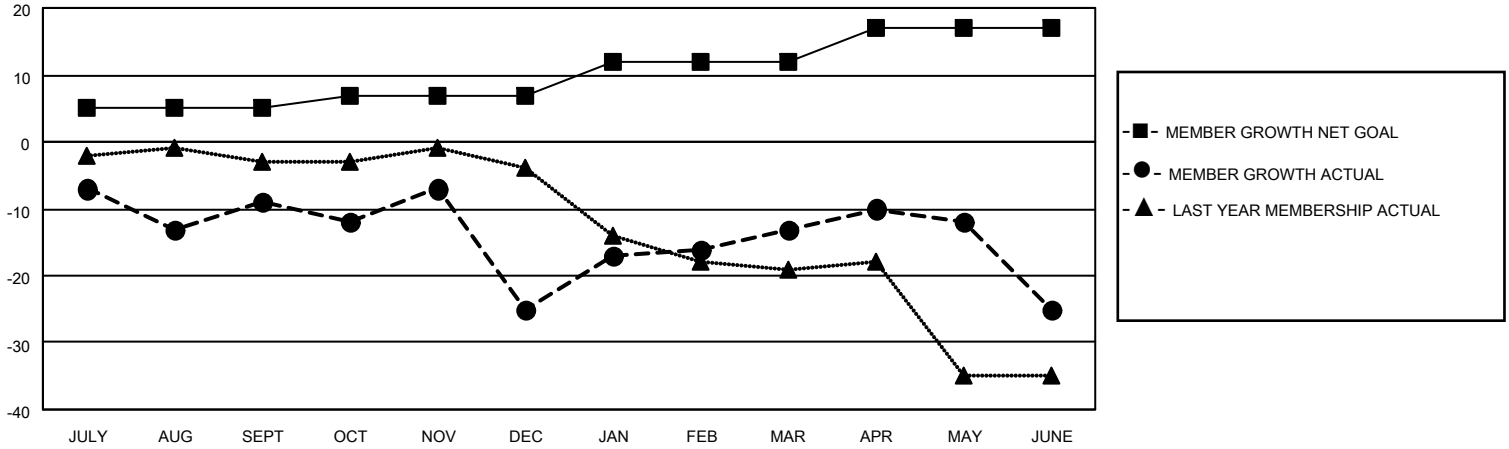
Clubs			
RESULTS FOR 2022-2023			
QUARTER	NEW CLUB GOAL	NEW CLUBS	DROPPED CLUBS
JULY/AUG/SEPT	1	0	0
OCT/NOV/DEC	0	0	1
JAN/FEB/MAR	0	0	0
APR/MAY/JUNE	0	0	0

Members			
RESULTS FOR 2022-2023			
QUARTER	MEMBER GROWTH NET GOAL	MEMBER GROWTH ACTUAL	DROPPED MEMBERS ACTUAL (including transfers)
JULY/AUG/SEPT	5	14	17
OCT/NOV/DEC	2	18	32
JAN/FEB/MAR	5	23	11
APR/MAY/JUNE	5	14	25

**GOALS AND ACTUAL NEW CLUBS CUMULATIVE**



**GOALS AND ACTUAL MEMBERS CUMULATIVE**



**DROPPED CLUBS: 1**

**15 CLUBS OF 24 ADDED 1 OR MORE NEW MEMBERS**

**GENDER DISTRIBUTION**

MALE	239 (53.59%)
FEMALE	207 (46.41%)
NON BINARY	0 (0.00%)
PREFER NOT TO ANSWER	0 (0.00%)

**DROPPED MEMBERS**

[CLICK HERE FOR CUMULATIVE MEMBERSHIP DATA](#)

DECEASED	5
CLUB CANCELLED	6
OTHER	74
<b>TOTAL</b>	<b>85</b>

TOTAL FAMILY UNIT MEMBERS 116

FAMILY MEMBERS PAYING HALF DUES 59